

MONTHLY MEMBERSHIP PROGRESS REPORT

District 321A3

Results as of: 6/30/2024

GMT:

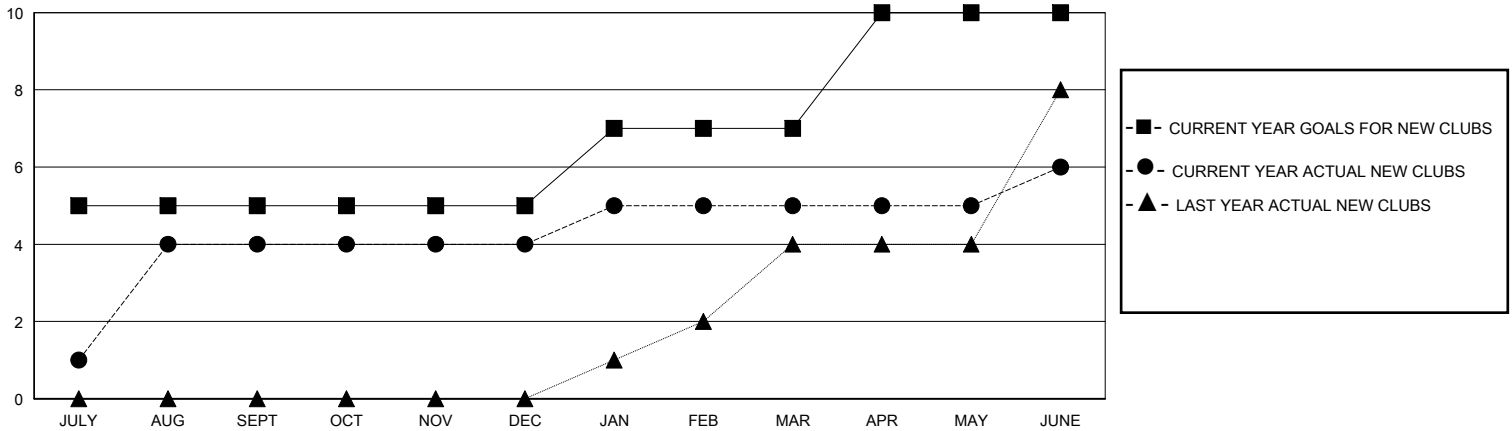
LOCATION INDIA

GMT CA

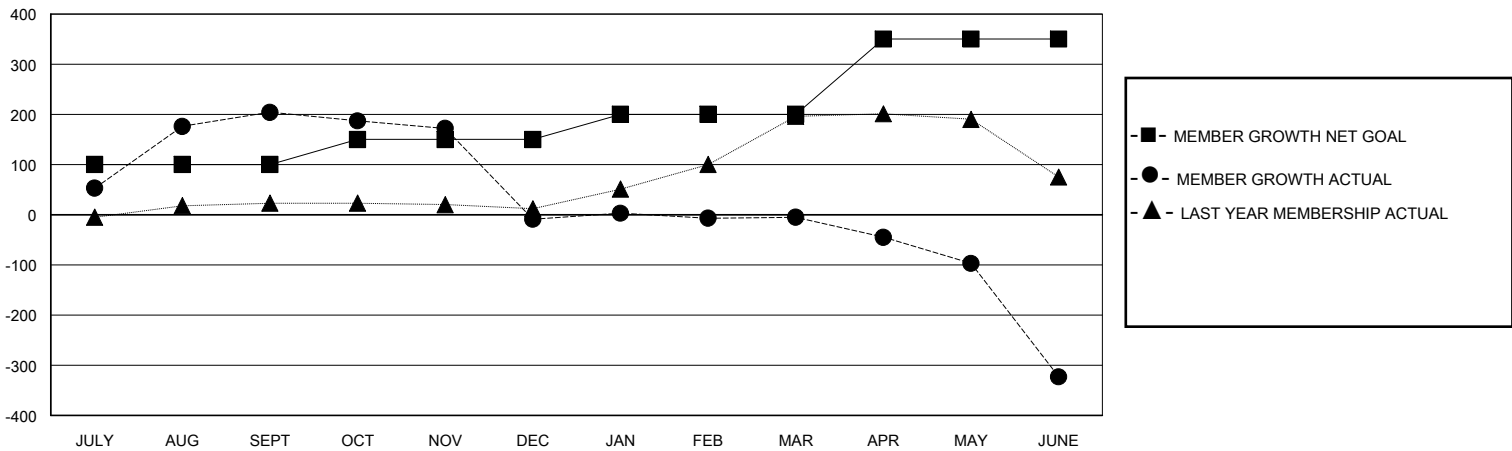
Clubs			
RESULTS FOR 2023-2024			
QUARTER	NEW CLUB GOAL	NEW CLUBS	DROPPED CLUBS
JULY/AUG/SEPT	5	4	0
OCT/NOV/DEC	0	0	6
JAN/FEB/MAR	2	1	3
APR/MAY/JUNE	3	1	1

Members			
RESULTS FOR 2023-2024			
QUARTER	MEMBER GROWTH NET GOAL	MEMBER GROWTH ACTUAL	DROPPED MEMBERS ACTUAL (including transfers)
JULY/AUG/SEPT	100	297	72
OCT/NOV/DEC	50	43	252
JAN/FEB/MAR	50	40	35
APR/MAY/JUNE	150	52	364

GOALS AND ACTUAL NEW CLUBS CUMULATIVE



GOALS AND ACTUAL MEMBERS CUMULATIVE



DROPPED CLUBS: 10 DROPPED MEMBERS DECEASED 6 CLUB CANCELLED 78 OTHER 637 TOTAL 721	62 CLUBS OF 131 ADDED 1 OR MORE NEW MEMBERS	GENDER DISTRIBUTION MALE 1,765 (80.59%) FEMALE 424 (19.36%)
	CLICK HERE FOR CUMULATIVE MEMBERSHIP DATA	TOTAL FAMILY UNIT MEMBERS 930 FAMILY MEMBERS PAYING HALF DUES 568